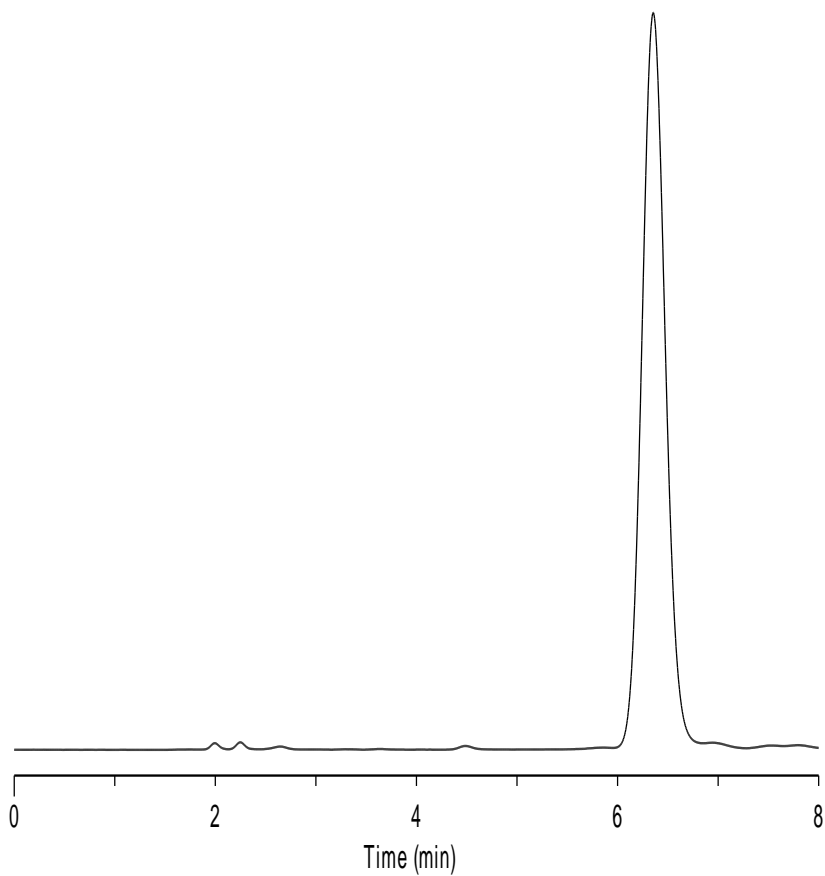


Cefalexin

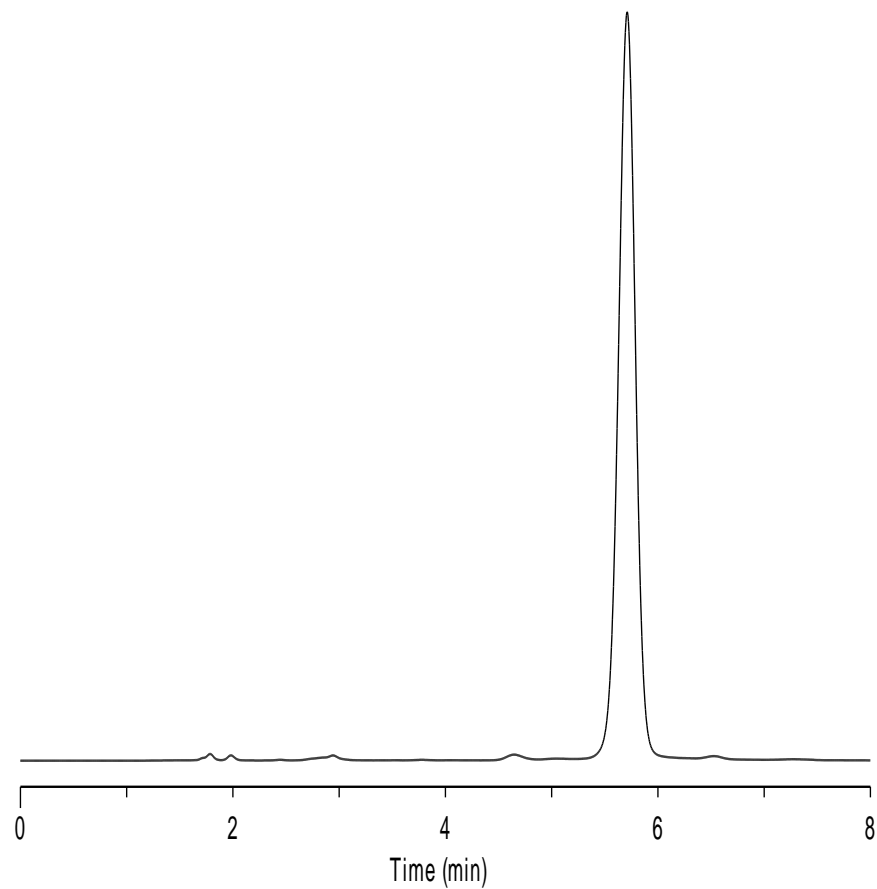
Columns: Listed on chromatograms
Dimensions: 150 × 4.6mm ID, 5 μm(all columns)
Mobile Phase: H₂O:MeOH:3.86%CH₃COONa:4%CH₃COOH=742:240:15:3
Flow Rate: 1.0ml/min
Temperature: Ambient
Detection: UV 254nm
Sample: Cefalexin

Diamonsil C18



[China](#)

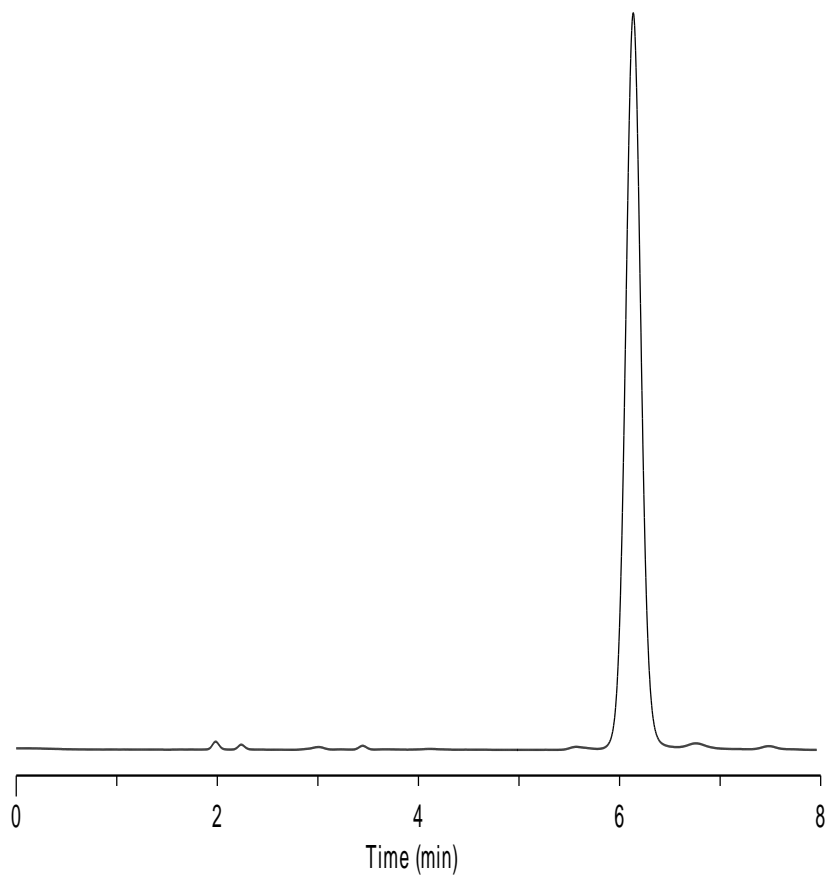
Inspire



[Canada](#)

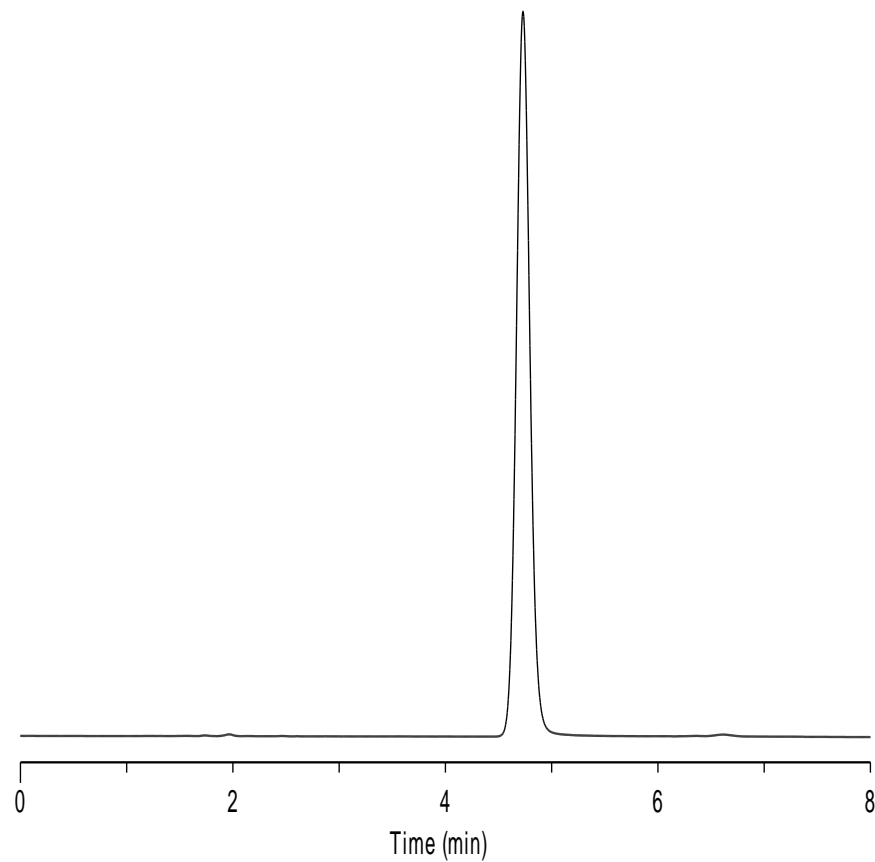
[US](#)

Platisil C18



[China](#)

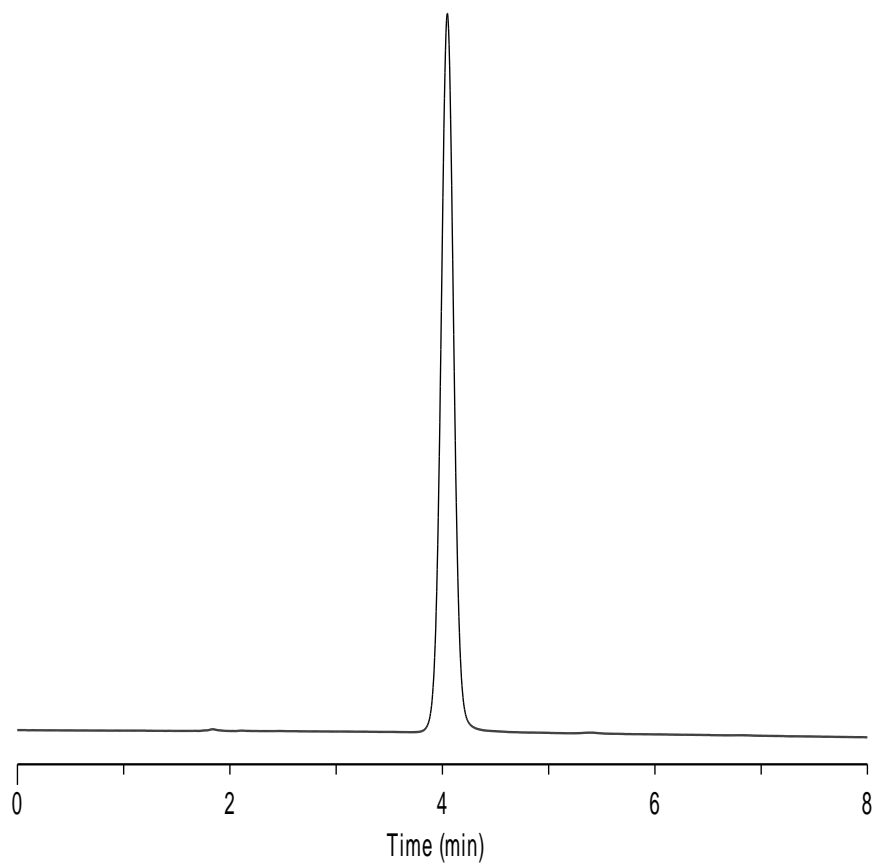
Spursil C18



[Canada](#)

[US](#)

Spursil C18-EP



[China](#)

[Canada](#)

[US](#)